

Welcome to DCHS Band

2023-2024 Band Parent Meeting

This presentation will be available on the band website – DCHSBand.org

New Everyone will be signed up on the website for “Email Blast”, to receive band/booster communications*



DOWLING
CATHOLIC HIGH SCHOOL
Leaders for life. Centered on Christ.

Mr. Stephen Holland

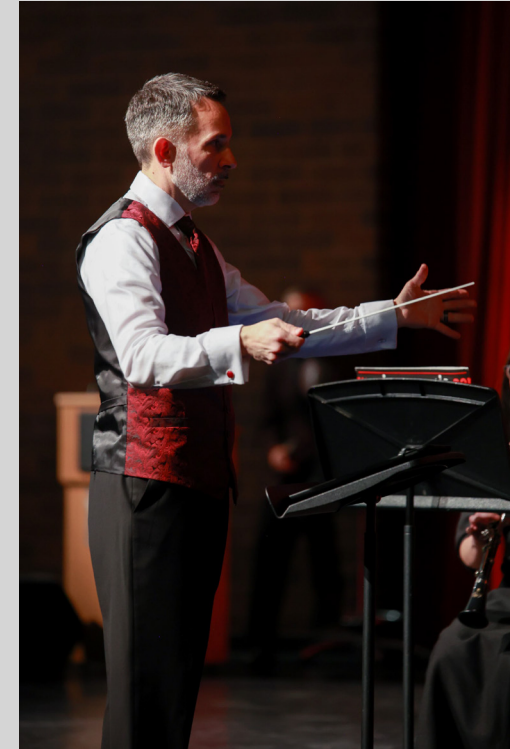
- Director of Bands
- 35th year at Dowling Catholic
- 11-12 Symphony Band
- Pep Bands
- Jazz Ensemble, Jazz II
- Various Chamber Groups



DOWLING
CATHOLIC HIGH SCHOOL
Leaders for life. Centered on Christ.

Mr. Nicholas Hoover

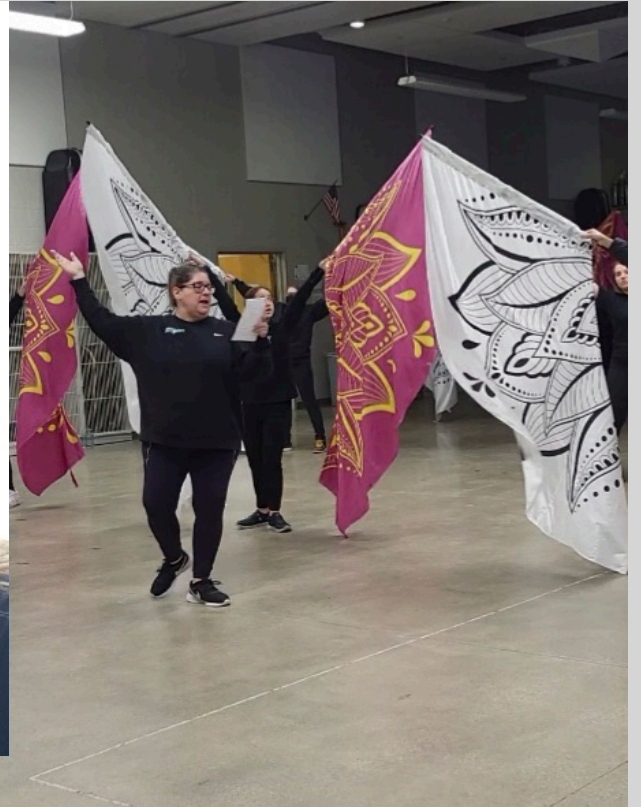
- Assistant Director of Bands
- 20th year at Dowling Catholic
- Vanguard (DCV)
- 9-10 Concert Band
- Percussion Methods
- Music History and Music Theory
- Pit Orchestra for Dowling's Spring Musical
- Various Chamber Groups



DOWLING
CATHOLIC HIGH SCHOOL
Leaders for life. Centered on Christ.

Coach Angie Countryman-Marcantel

- Colorguard & Winterguard Director
- 21st Year at Dowling Catholic
- Coaching, designing, choreographing, judging Iowa color guards for 30 years
- Co-founded/Executive Director for Studio Tucee' Winter Guard who competed on the Winterguard International (WGI) level - 2000-2003



DOWLING
CATHOLIC HIGH SCHOOL
Leaders for life. Centered on Christ.

Dowling Catholic Band Boosters

- As a parent of a band student, you are automatically a member of the Band Boosters
- Parent-run organization
- Mission is to assist and support the Dowling Catholic Band Program and its Directors, staff, and students
- Being an active member of the Band Boosters is a great way to meet other parents and form new friendships!!



DOWLING
CATHOLIC HIGH SCHOOL
Leaders for life. Centered on Christ.

Dowling Catholic Band Boosters

	<u>2022-2023</u>	<u>2023-2024</u>
President:	Leenie Rodriguez	Leenie Rodriguez (Interim)
Vice President:	Suzie Fenton	Denise Davies
Secretary:	Mary Dietrich	Steve Van Brocklin
Treasurer:	Troy Lewis	Troy Lewis
Colorguard Representative:	Laurel Kruse	TBD



DOWLING
CATHOLIC HIGH SCHOOL
Leaders for life. Centered on Christ.

Our Different Bands

- Dowling Catholic Vanguard (DCV)
 - Summer to mid-October
 - Marching Band + Colorguard
 - All Students
 - Percussion
 - Battery = Marches on field
 - Pit = Stationary; at the front
- Pep Band
 - Football/basketball season
 - All Wind + Percussion
 - Divided into Pep Band A & Pep Band B
 - Perform at football playoff games and select basketball games
 - 2-3 required performances to be assigned



DOWLING
CATHOLIC HIGH SCHOOL
Leaders for life. Centered on Christ.

Our Different Bands

- Symphony Band
 - Mid-October to end of school year
 - 1st period
 - Juniors and Seniors
 - Directed by Mr. Holland
- Concert Band
 - Mid-October to end of school year
 - 1st period, then 5th period (2nd semester)
 - Freshmen and Sophomores
 - Directed by Mr. Hoover



DOWLING
CATHOLIC HIGH SCHOOL
Leaders for life. Centered on Christ.

Colorguard

- Nonmusical section of Vanguard
 - Interprets the music via dance and synchronized spinning of flags, sabers, rifles and other pieces of equipment
- Winterguard
 - Performs to recorded music at halftime of basketball games
 - Performs at competitions
- Tryouts are held in the Spring
- All students, male or female, are encouraged to participate



DOWLING
CATHOLIC HIGH SCHOOL
Leaders for life. Centered on Christ.

Jazz Bands & Chamber Ensembles

- Jazz Bands (optional)
 - Downtown Swing Project – *Selection Only*
 - Jazz Ensemble – *Auditioned in spring*
 - Jazz II – *Auditioned in spring*
- Chamber Ensembles (optional)
 - Brass Choir
 - Clarinet Choir
 - Flute Choir
 - Pit Orchestra for Spring Musical
 - Sax Choir

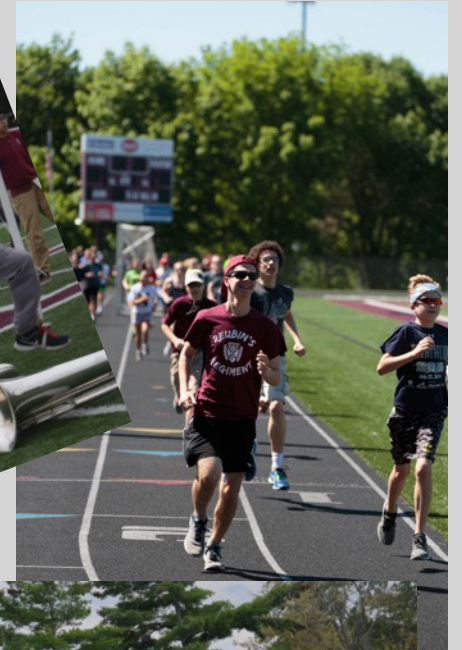


* Check the Google Calendar for rehearsal times!!

School Year Rehearsals

- Vanguard
 - A Days – Zero Hour + 1st Period (7 a.m. – 9:30 a.m.)
 - B Days – Zero Hour (7 a.m. – 8 a.m.)
 - After the first few weeks only A days
- Concert Band (after marching season)
 - 1st Period – First semester
 - 5th Period – Second semester
- Symphony Band (after marching season)
 - 1st Period – Both semesters

“Zero Hour” = 60-90 minutes before school starts



DOWLING
CATHOLIC HIGH SCHOOL
Leaders for life. Centered on Christ.

SmartMusic

- Web-based program; primary practice tool
 - Already paid for– access code provided
 - **Students need to register using their Dowling address**
- Accessed by any electronic device
 - Typically students use Chromebooks, but can also use computers, laptops, tablets
- Music assigned as homework / Final Exam
- While a student plays or practices at home, SmartMusic scores the student based on accuracy
- Submitted to Band Director for grading
- **Doesn't apply to Percussion**



DOWLING
CATHOLIC HIGH SCHOOL
Leaders for life. Centered on Christ.

Band Lessons

- Private lessons (strongly recommended)
 - Outside of school
 - Private Lesson teacher must be a specialist at the instrument the student is taking lessons on (ex. Flute lessons from a flute teacher, or an area band director who's main instrument is flute)
 - Must be for the instrument your student actively plays in a band ensemble
 - See recommended teacher list – posted every fall.
- “Pull Out” Lessons during the school day (if no private lessons)
 - Two 20-minute lessons every 5-6 weeks
 - Rotating schedule – students generally get pulled from a specific class once a semester.
 - Mr. Hoover teaches:
 - 9-10 grade woodwinds
 - All percussion
 - Mr. Holland teaches:
 - 11-12 grade woodwinds
 - All brass



DOWLING
CATHOLIC HIGH SCHOOL
Leaders for life. Centered on Christ.

Grading (subject to change)

- 50% - Exam/Tests = Performances at contests, festivals, concerts
- 20% - Final Exam
- 10% - Coursework (Lessons)
- 10% - Homework (Assignments – most through smartmusic)
- 10% - Participation (based on participation in rehearsals) and Enrichment (optional activities e.g. all-state auditions, chamber ensembles, solo/ensemble contests, honor bands, pep assemblies, etc.)



DOWLING
CATHOLIC HIGH SCHOOL
Leaders for life. Centered on Christ.

Expectations

- Band is a performing arts course ... performances are exams and therefore, attendance is **required** (unless student is excused by Director).
- DCHS attendance policies apply to Vanguard practices during “zero hour.”
- **Be on time! (aka 10 minutes early). Students are expected to be at their designated locations when rehearsal begins.**
- Be prepared ... have everything you need for that practice or performance!



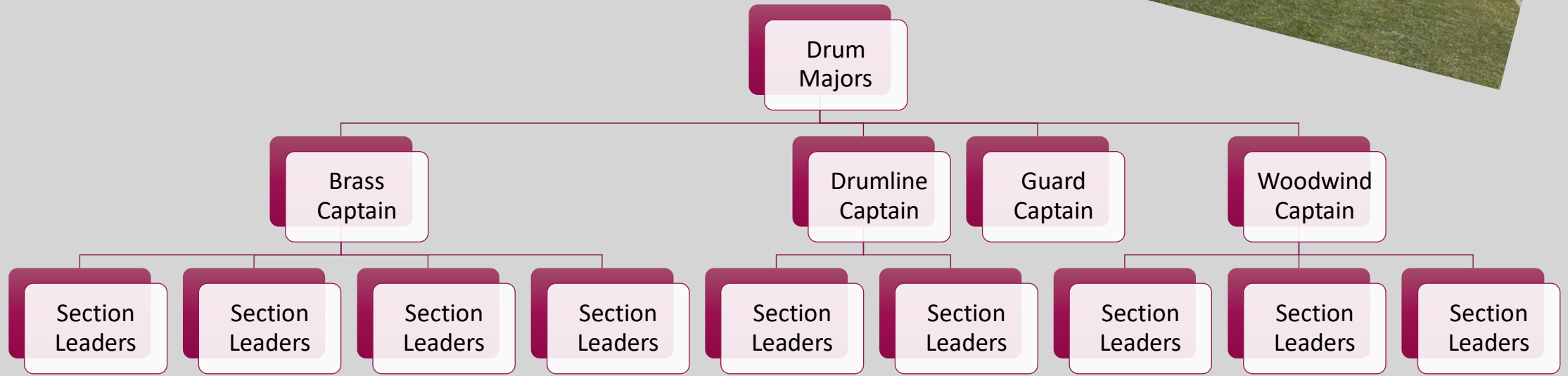
DOWLING
CATHOLIC HIGH SCHOOL
Leaders for life. Centered on Christ.

Marching Season



DOWLING
CATHOLIC HIGH SCHOOL
Leaders for life. Centered on Christ.

DCV Student Leaders



Summer Rehearsals –

Always refer to [Calendar – Dowling Catholic Bands \(dchsband.org\)](https://www.dchsband.org)!

June

- *Rookie Marching Boot Camp: Friday, June 2, 12:30 p.m. – 3:30 p.m.*
- *All DCV: June 5-10* (refer to calendar for times)
- ISU Marching Camps (optional for Colorguard, Drumline & Leadership only)
 - June 16 or 17 - <https://www.music.iastate.edu/org/marching/academy>
 - Refer to website for which camps offered which day



DOWLING
CATHOLIC HIGH SCHOOL
Leaders for life. Centered on Christ.

Summer Rehearsals (all on our calendar)

- June

- June 2 – Rookie marching camp
- June 3-4 – Drumline camp
- June 5-10 – Full DCV rehearsals

- July

- Family Week – No Events
 - July 23 – July 30

- July/August

- Band Camp (**Mandatory**):
 - July 31- August 11
- Dress Rehearsal
 - August 12, 12 p.m. – 5 p.m.

- Picnic & Parent Performance

- August 12, 5:30 p.m. – 9 p.m.

- Picture Day

- August 15, 12 p.m – 4 p.m

- DCV Evening rehearsal

- Aug 17, 6:00 p.m. – 9 p.m.

- DCV Drumline Stadium Rehearsal

- Aug 21, 6:00 p.m. – 9 p.m.

- DCV School schedule

- Starts Aug 23, 7 a.m.



DOWLING
CATHOLIC HIGH SCHOOL
Leaders for life. Centered on Christ.

Band Camp

Committee Chair: **TBD**

- July 31 – August 12 (Rain or Shine)
- Dowling Catholic High School
- Bring lunch
- Bring hats, sunglasses, sunscreen, etc.
- Wear light-colored clothing and tennis shoes
- **Stay hydrated!!! Bring a very big water bottle (1 liter +)**
- Water will be available to refill the large jugs the students will bring to camp.
- Medical volunteer on site each day



DOWLING
CATHOLIC HIGH SCHOOL
Leaders for life. Centered on Christ.

Marching Uniforms



Full uniform

Primarily for football games

Plume
Shako
Gloves
Gauntlets
Coat
Bibs

New this year: “Performance top” – An alternative top that will be worn for competitions instead of the “Coat” that will fit the theme of the show.

What you don’t see ...

- DCV Wicking T-shirt
- Athletic Shorts / Running Tights (you provide)
- Black Crew/Long Socks (you provide)
- Marching Shoes
 - All first year students will need to purchase marching shoes. Anyone wanting new ones for their child can purchase as well.

Students arrive and depart performances in their wicking t-shirt, Performance Top, shorts, black socks and their own shoes.

The rest of the uniform is kept on the trailer or at the school.



Marching Uniform Purchases



- Wicking T-shirts
 - Worn under marching uniform
 - Should order 2 shirts from the campus store
- Performance Top
 - All members except Colorguard must purchase (around \$60-80). Order info TBA
- Marching Shoes
 - All “Rookie” members except colorguard must purchase

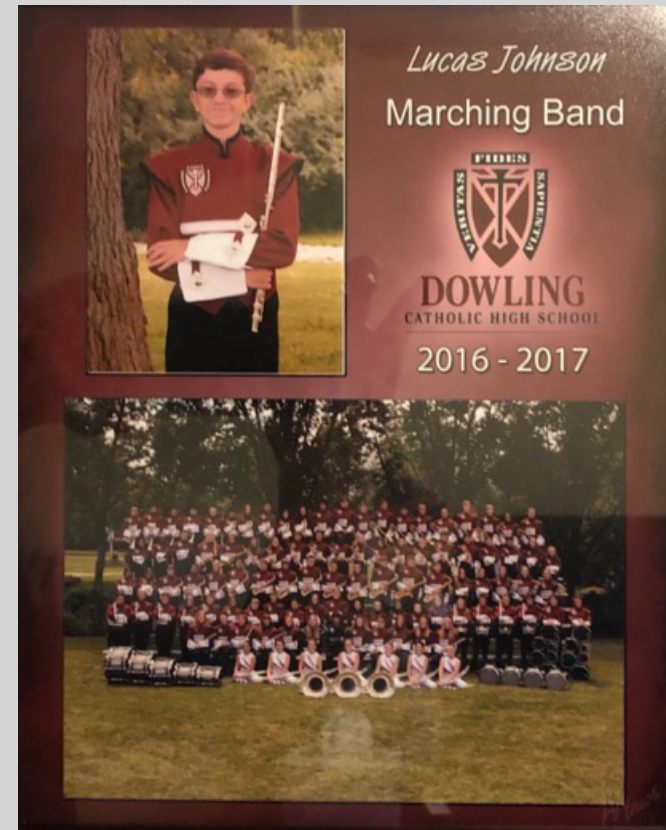


DOWLING
CATHOLIC HIGH SCHOOL
Leaders for life. Centered on Christ.

Vanguard Picture Day

Committee Chair: Susie Fenton

- August 15, 12 p.m – 4 p.m
- Pictures taken by Vorland Photography
 - Full Band
 - Section Pictures
 - Individual Pictures
 - Sibling Pictures
- Pictures will be available for purchase



DOWLING
CATHOLIC HIGH SCHOOL
Leaders for life. Centered on Christ.

Band Picnic & Vanguard Parent Performance

*Committee Chair: **TBD***

- Sunday, August 13th @ 5:30 p.m. - Dowling Catholic HS Cafeteria and stadium complex
- Picnic for All Band Families
- Following the picnic, DCV will change into their uniforms and prepare for the performance
- **This year's show will be unveiled to the families for the first time!**
- After the performance, families will be allowed on the field to take pictures



DOWLING
CATHOLIC HIGH SCHOOL
Leaders for life. Centered on Christ.

DCV Performance - Competition Schedule

Football:

- September 8
- September 15
- October 6 (Homecoming)
- October 20 – Pep Band Only
- Competitions:
 - Sept 23 – Pella
 - Sept 30 – Band of America Iowa Regional (at Waukee NW)
 - Oct 7 - Valleyfest Showdown
 - Oct 14 - State Festival & Waukee Invitational – all day (Waukee)



DOWLING
CATHOLIC HIGH SCHOOL
Leaders for life. Centered on Christ.

Football Games

- All of Dowling Catholic's home football games are at Valley Stadium in West Des Moines (unless otherwise indicated)
- **Students need their own transportation to/from the home games**
- Some sections get together for a group meal before the game
- Parents who want to watch the performances will need a ticket to the game*

** Volunteers (e.g. chaperones, roadies, media, uniforms, etc.) will be admitted for free*



DOWLING
CATHOLIC HIGH SCHOOL
Leaders for life. Centered on Christ.

Marching Competitions

- Specific schedules are included in the notes on the Google Calendar
- Parents are encouraged to come out and support DCV at these competitions!!
- A mix of times this coming year.
- There is typically an admission charge for spectators.
- Show your DCV pride ... wear your Show Shirt!!!
- Help us send DCV off before every competition by lining the sidewalk as they board the buses – signs and noisemakers are encouraged!!



DOWLING
CATHOLIC HIGH SCHOOL
Leaders for life. Centered on Christ.

DCV Mass & Dinner

*Committee Chairs: **TBD***

- DCV celebrates Mass together at the Dowling Catholic HS Chapel before the Dinner
- Dinner for all DCV members and families of the Senior members
- Saturday, October 14th between State Contest and Waukee Invitational
- Located in Dowling Catholic HS Cafeteria
- **Dinner honors the Senior members of Vanguard**
- Seniors share stories and receive a maroon feather for their plumes
- Volunteers are need to help serve the dinner



DOWLING
CATHOLIC HIGH SCHOOL
Leaders for life. Centered on Christ.

Concert Season



DOWLING
CATHOLIC HIGH SCHOOL
Leaders for life. Centered on Christ.

Concert Uniforms

Committee Chair: Kathleen Riessen



- Boys
 - Tuxedos provided by the Band
 - You need to provide black socks and black dress shoes.
 - Tuxedo stored at your home during concert season
 - Shirt can be laundered; rest of the tux dry cleaned if needed
- Girls
 - Dresses, shoes and pearls provided by Band
 - Pearls distributed before and collected after each performance
 - Shoes should not be worn to/from performances
 - Dresses stored at home
 - Dry clean, if needed



DOWLING
CATHOLIC HIGH SCHOOL
Leaders for life. Centered on Christ.

Christmas Concert

*Committee Chair: **TBD***



- 4 p.m. on Sunday, December 11
- Dowling Catholic High School
- Volunteers decorate the auditorium and prepare the concert program
- Drive by caroling for brass choir, following - TBD



DOWLING
CATHOLIC HIGH SCHOOL
Leaders for life. Centered on Christ.

Jazz Performances

- Fall Grade School Tour
- World Food Prize Laureate Performance at the Capital
- Pancake Breakfast Performance
- DCHS Open House Performance
- Performance at the Turner Jazz Center with the Drake University Jazz Band
- Triton Jazz Festival
- DCG Jazz Festival
- Ron Battani Jazz Festival at Hoover High School,
- Bluffs Jazz Festival
- Spring Grade School Tour
- Night of Jazz.

Dates for all but the grade school tours are on the band calendar.

- *Chaperones and Roadies will be needed*



DOWLING
CATHOLIC HIGH SCHOOL
Leaders for life. Centered on Christ.

Perry Band Olympics

- An optional Solo/Ensemble festival
- **Saturday, February 17, 2024** (runs from early morning to late afternoon)
- Perry High School in Perry, Iowa
- Students are encouraged to sign-up for solos or small ensembles. Those in our chamber groups typically attend
- **Students need their own transportation to/from Perry**
- There is an admission charge for spectators.



DOWLING
CATHOLIC HIGH SCHOOL
Leaders for life. Centered on Christ.

State Large Group Festival

- Saturday, May 4, 2024
- **Location and Time TBD**
- Concert and Symphony Bands perform



DOWLING
CATHOLIC HIGH SCHOOL
Leaders for life. Centered on Christ.

Chamber Concert

*Committee Chair: **TBD***

- Solos & Ensembles
- Invitation Only
- Dowling Catholic High School
- May xx, 2024
- **Volunteers prepare the concert programs and provide refreshments**



DOWLING
CATHOLIC HIGH SCHOOL
Leaders for life. Centered on Christ.

Other Competitions and Performances (optional)

- All-State Band Auditions and festival
- SCIBA Honor Band Auditions and festival
- Drake Honor Band Festival
- Cyclone Honor Band Festival
- Drake Honor Jazz Band Festival



DOWLING
CATHOLIC HIGH SCHOOL
Leaders for life. Centered on Christ.

Family Band Accounts



DOWLING
CATHOLIC HIGH SCHOOL
Leaders for life. Centered on Christ.

How You Pay for Band ...

- Band or Colorguard Participation Fee
 - Separate fee charged by Dowling Catholic
 - \$225 per year for Band
 - \$300 per year for Colorguard
 - Collected in October via your SmartTuition account
 - Goes towards the Band's overall budget for general operating expenses such as purchasing music, buying and/or repairing school-owned instruments, etc.
 - If applicable, 8th grade band scholarships applied to SmartTuition account (Not family band account)



DOWLING
CATHOLIC HIGH SCHOOL
Leaders for life. Centered on Christ.

How You Pay for Band ...

- Family Band (or Colorguard) Account
 - Streamlined way to pay for the individual expenses your student accrues for Band or Colorguard
 - One account per family
 - Receive statements in January and March of each year or upon request
 - Make payment through:
 - 2022-2023 ONLINE PAYMENT
 - TBD - (All new incoming students & advance payments for '23-'24)
 - Payment by debit or credit card will be assessed a processing fee of 2.85%



DOWLING
CATHOLIC HIGH SCHOOL
Leaders for life. Centered on Christ.

Family Band Accounts

- Charges to Your Band Account
 - Marching and Concert Uniform
 - Gloves (except Drumline and Frontline)
 - Marching Shoes – 1st year only or if receiving new shoes
 - Concert Shoes (Girls) – 1st year only or if receiving new shoes
 - Concert Tuxedo Shirt (Boys)
 - Food and Transportation costs
 - Instrument rentals
 - Fees associated with band contests



DOWLING
CATHOLIC HIGH SCHOOL
Leaders for life. Centered on Christ.

Family Band Account Policies

- Your account will be charged when the entire band has a function
- Transportation is contracted in advance based on entire band being transported
- Fees for solo/ensemble contests will be assessed if student signs up and then, drops out



Family Band Account Policies

- Band Account must be at a \$0 or positive balance at the end of each school year or your student will not be allowed to sign-up for Band/Colorguard for next year.
- Accounts not paid by June 1st will receive \$25 late fee on 1st of month starting in June until account is paid in full.
- Positive Band Account balances roll forward into the next school year up through Senior year
- At end of Senior year, positive balance is NOT automatically returned
 - Request remaining funds to be returned
 - Donate to another family band account
 - Money left in your account is used by Band Boosters



DOWLING
CATHOLIC HIGH SCHOOL
Leaders for life. Centered on Christ.

Family Band Accounts


- New or have a \$0 balance?
 - An initial deposit of \$100-150 is recommended
- Contact Information:
 - dchsbandtreasurer@gmail.com
- Mail checks to:
 - DCHS Band Boosters
 - 1400 Buffalo Road
 - West Des Moines IA 50265



DOWLING
CATHOLIC HIGH SCHOOL
Leaders for life. Centered on Christ.

Communication

- Website – dchsband.org
- Emails (aka web-blasts) – **signup online!**
 - webmaster@dchsband.org
- Twitter
 - @dowlingband
- Facebook
 - Dowling Catholic Band Page
 - Dowling Catholic Color Guard Group
- Google Calendar
- Remind App (for students)

 Email Blast Signup

Subscribe to our mailing list

* indicates required

Email Address *

First Name



Communication

- Band Booster Meetings
 - 1st Thursday of the Month (September – May)
 - 6:30 – 7:30 p.m.
 - Live & virtual
 - Minutes posted on band's website



DOWLING
CATHOLIC HIGH SCHOOL
Leaders for life. Centered on Christ.

Band Registration (specific to Band)

- Supplemental registration process for Band and Colorguard
- Collects additional information for:
 - Medical information
 - food allergies/preferences
 - T-shirt sizes and shoe sizes (to order for new and ensure inventory for returning)
- Link to our supplemental registration will go out via email
- Please complete your student's registration by 5/30 – on the dchsband.org website.



DOWLING
CATHOLIC HIGH SCHOOL
Leaders for life. Centered on Christ.

Additional Booster Activities



Band Apparel & Merchandise

Committee Chairs: *Leenie Rodriguez*

- Partnering with the Dowling Catholic Campus Store
- Broadens our spirit wear offerings
- Streamlines the ordering process
- **Pay with a credit card when you order**
- Orders can be shipped to you or picked up from the store

<https://www.dchscampusstore.com/band/>



DOWLING
CATHOLIC HIGH SCHOOL
Leaders for life. Centered on Christ.

Band Apparel & Merchandise



- Commemorative Show Shirts & Patches
 - Show Shirts are optional; Order through the Campus Store
 - Parents - Wear them when you attend competitions, volunteer, etc.
 - Show patch provided to every student (charged to Band Account)

Marching Uniforms

*Committee Chairs: **Kathleen Riessen***

- Organize and fit marching uniforms to students during August band camp
- Coordinate alterations with Skeffington's
- Assist with minor fixes and alterations during marching season
- Handling of plumes at performances
- Ensure uniforms are inventoried at beginning/end of season



DOWLING
CATHOLIC HIGH SCHOOL
Leaders for life. Centered on Christ.

Chaperones

*Committee Chairs: Diana Givens – Marching Season
Leenie Rodriguez – Post Marching & Jazz*

- Volunteers serve as chaperones for any trips on which our bands travel via bus
- Accompany the students on the bus to and from the event
- Chaperones must complete a background check and their VIRTUS training before assuming this role
- Collect and package cookies donated by parents for each marching competition trip



DOWLING
CATHOLIC HIGH SCHOOL
Leaders for life. Centered on Christ.

Medical

*Committee Chairs: **Deb Hummel***

- Volunteers with a medical background are present at every band event regardless of location
- Medical volunteers attend every event with the students and travel on the bus with them for events outside of the DSM metro area.
- Volunteers must complete a background check and their VIRTUS training before assuming this role
- During Band Camp and marching events, medical volunteers will be in their DCV medic t-shirts so they are easily identified

Your student should be rested, well-fed, and hydrated throughout the entire marching season – Marching Band qualifies for the PE exemption for a reason!!!!



DOWLING
CATHOLIC HIGH SCHOOL
Leaders for life. Centered on Christ.

Roadies / Set Crew

Committee Chair: *Barry Cook & Bob Volp*

- Volunteers...
 - Build and maintain sets and props for show
 - Load and unload the trailer
 - Move props and equipment on/off the field during marching performances
 - Help with props on field during performances
 - Assist with loading, unloading, and setting up equipment for concerts, contests, etc.



Many hands make light work!



DOWLING
CATHOLIC HIGH SCHOOL
Leaders for life. Centered on Christ.

Food

*Committee Chair: **Megan Aerisolphal***

- Organizes and serves the meals to DCV prior to marching competitions
- Volunteers are needed to:
 - Help provide or prep food
 - Set-up the meal
 - Serve the meal
 - Clean-up after the meal



DOWLING
CATHOLIC HIGH SCHOOL
Leaders for life. Centered on Christ.

Recruitment

*Committee Chair: **TBD***

- Uses targeted communications, social media and events to create awareness and favorability for the DCCHS Band program
- Helps to create an environment in 7/8th grade students:
 - Become interested in DCCHS band
 - Desire, receive and actively seek more information about DCCHS band
 - Demonstrate interest in joining band
 - Ultimately register for and participate in band at DCCHS
- Develop and/or deepen relationships between DCCHS Directors and students with middle school band students
- Maintain regular contact with middle school parents and band teachers. Highlight band activities, accomplishments, individual and small group achievement
- Coordinate with DCCHS Marketing Staff to include band in DCCHS communications to the the Dowling Catholic community



DOWLING
CATHOLIC HIGH SCHOOL
Leaders for life. Centered on Christ.

Recruitment

- Staffs Band's informational tables at November 3rd Open House
- Greets elementary students and parents at All-City Band events in September and January
- Represents the DCHS Band at middle school concerts and events
- Helps organize Band Bash (TBD) – the week-long mini-band camp for middle school students at Dowling (July 26-30)



DOWLING
CATHOLIC HIGH SCHOOL
Leaders for life. Centered on Christ.

Media

*Committee Chairs: **John Seda***

- Takes photos and videos
 - From band camp through the Spring Concert, committee members are on the sidelines and near the stage at every performance
- Zenfolio – dowlingband.zenfolio.com
 - Password-protected, web-based photo/video storage and sharing site
 - Free downloads
- *Volunteers are needed to take pictures – any type of camera or phone is fine – and videos.*



DOWLING
CATHOLIC HIGH SCHOOL
Leaders for life. Centered on Christ.

Media

*Committee Chair: **TBD***

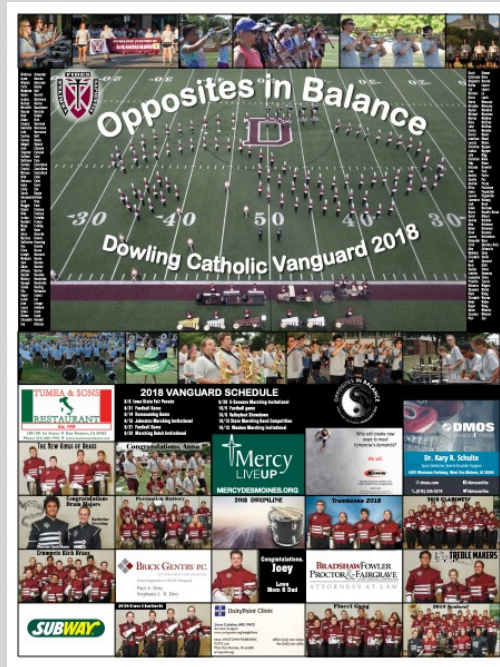
- Manages the DCHS Band website – www.dchsband.org
- Responsible for the Dowling Band Social Media
 - Twitter Account (@dowlingband)
 - To receive updates on your phone, send a text message to 40404 with this message: follow @dowlingband
 - Facebook Page – Dowling Catholic Band



DOWLING
CATHOLIC HIGH SCHOOL
Leaders for life. Centered on Christ.

Band Poster

Committee Chair: **TBD**



- Band Poster (similar to athletic team posters)
- Sell ads to raise money for the band boosters
- Families can purchase ads for Seniors, Sections, Siblings, etc.

Deep Maroon Serenade

Committee Chair: *Susie Fenton*

- **Band Program's Major Fundraiser – the only one!**
 - 2024's Fundraising Goal = \$x,000
- Proceeds benefit the Band Program
 - Donation requests are made during the event
- **2024 Date/Location TBD**
- Symphony Band, Concert Band, and Chamber Groups Perform
- “Band Aid” fundraising letter campaign follows Deep Maroon Serenade

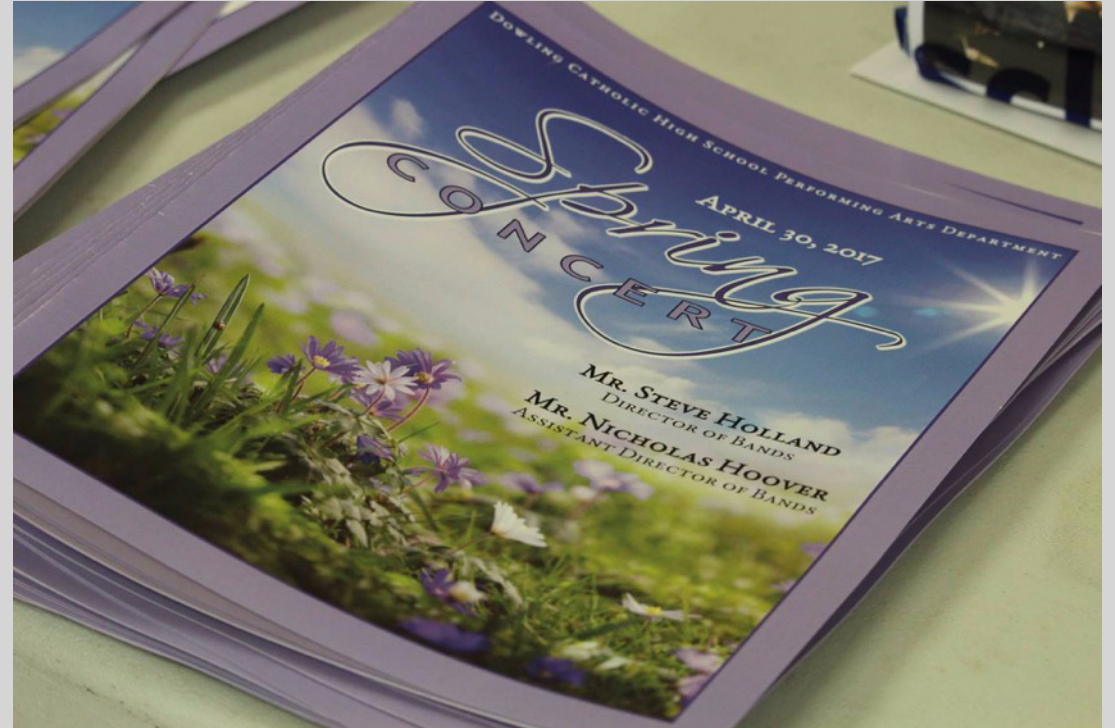


DOWLING
CATHOLIC HIGH SCHOOL
Leaders for life. Centered on Christ.

Spring Concert & Awards

Committee Chair: *Leenie Rodriguez*

- Afternoon of Sunday April 28, 2024
- Dowling Catholic High School
- **Volunteers prepare the concert program and organize the band awards**



DOWLING
CATHOLIC HIGH SCHOOL
Leaders for life. Centered on Christ.

Questions?
Thank you for coming!!



DOWLING
CATHOLIC HIGH SCHOOL
Leaders for life. Centered on Christ.